

Recombinant Calcineurin Like Phosphoesterase Domain Containing Protein 1 (CPPED1)

Catalog No: tcup6224



Available Sizes

Size: 10ug

Size: 50ug

Size: 200ug



Specifications

Application:

Positive Control; Immunogen; SDS-PAGE; WB.

Species:

Rattus norvegicus (Rat)

Source:

E.coli

Purity / Grade:

> 95%

Amino Acids:

Arg101~Glu312

SwissProt:

Q66H71

Predicted Molecular Weight:

27.9kDa

Observed Molecular Weight:

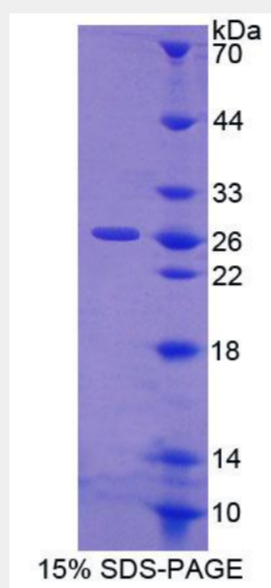
27.9kDa

Tags:

two N-terminal Tags, His-tag and T7-tag

Product Description

Prokaryotic expression



All products are for RESEARCH USE ONLY. Not for diagnostic & therapeutic purposes!