

Recombinant Calcineurin Like Phosphoesterase Domain Containing Protein 1 (CPPED1)

Catalog No: tcup6223



Available Sizes

Size: 10ug

Size: 50ug

Size: 200ug



Specifications

Application:

Positive Control; Immunogen; SDS-PAGE; WB.

Species:

Mus musculus (Mouse)

Source:

E.coli

Purity / Grade:

> 95%

Amino Acids:

Met1~Glu312

SwissProt:

Q8BFS6

Predicted Molecular Weight:

38.9kDa

Observed Molecular Weight:

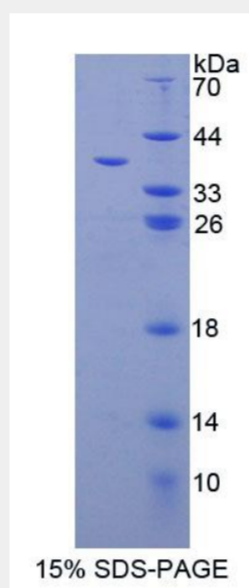
38.9kDa

Tags:

two N-terminal Tags, His-tag and T7-tag

Product Description

Prokaryotic expression



All products are for RESEARCH USE ONLY. Not for diagnostic & therapeutic purposes!