

Recombinant Cysteine Conjugate Beta Lyase, Cytoplasmic (CCbL1)

Catalog No: tcup6119



Available Sizes

Size: 10ug

Size: 50ug

Size: 200ug



Specifications

Application:

Positive Control; Immunogen; SDS-PAGE; WB.

Species:

Homo sapiens (Human)

Source:

E.coli

Purity / Grade:

≥ 98%

Amino Acids:

Met1~Leu422

SwissProt:

Q16773

Predicted Molecular Weight:

51.6kDa

Observed Molecular Weight:

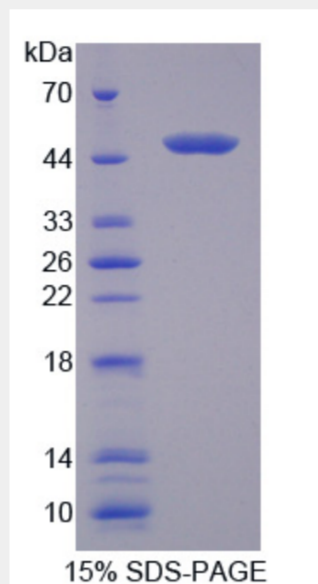
51.6kDa

Tags:

N-terminal His-Tag

Product Description

Prokaryotic expression



All products are for RESEARCH USE ONLY. Not for diagnostic & therapeutic purposes!