

Recombinant Phospholipase A2 Receptor 1 (PLA2R1)

Catalog No: tcup6096



Available Sizes

Size: 10ug

Size: 50ug

Size: 200ug



Specifications

Application:

Positive Control; Immunogen; SDS-PAGE; WB.

Species:

Homo sapiens (Human)

Form:

Freeze-dried Powder

Storage Buffer:

20mM Tris, 150mM NaCl, pH 8.0 containing 0.01% SKL, 5% Trehalose.

Concentration:

100μg/ml

Recommended Dilution:

Reconstitute in ddH₂O to a concentration of 0.1-1.0mg/ml

Do not Vortex.

Source:

E.coli (Prokaryotic expression)

Purity / Grade:

≥ 97%

Amino Acids:

Tyr385~Cys643

Storage Instruction:

Avoid repeated freeze/thaw cycles. Store at 2-8°C for one month. Aliquot and store at -80°C for 12 months.

SwissProt:

Q13018

Predicted Molecular Weight:

33.6kDa

Observed Molecular Weight:

33kDa as determined by SDS-PAGE reducing conditions.

Tags:

N-terminal Tag

Cellular Location:

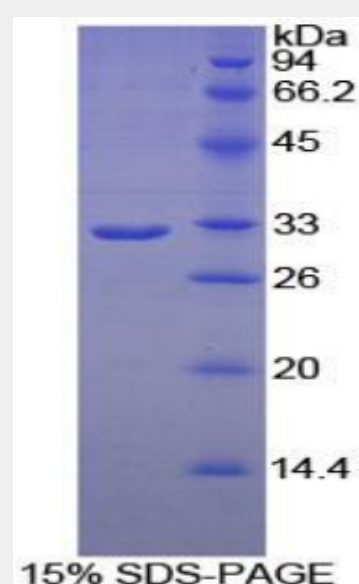
Membrane,Secreted.

Notes

Stability Test: The thermal stability is described by the loss rate. The loss rate was determined by accelerated thermal degradation test, that is, incubate the protein at 37°C for 48h, and no obvious degradation and precipitation were observed. The loss rate is less than 5% within the expiration date under appropriate storage condition.

Product Description

Prokaryotic expression



SEQUENCE

```

                                YNRNCY KLQKEEKTWH
EALRSCQADN SALIDITSLA EVEFLVTLLG DENASETWIG LSSNKIPVSF
EWSNDSSVIF TNWHTLEPHI FPNRSQLCVS AEQSEGHWKV KNCEERLFYI
CKKAGHVLSD AESGCQEGWE RHGGFCYKID TVLRSFDQAS SGYYCPPALV
TITNRFEQAF ITSLISSVVK MKDSYFWIAL QDQNDTGEYT WKPVGQKPEP
VQYTHWNTHQ PRYSGGCVAM RGRHPLGRWE VKHCRHFKAM SLC
  
```

Sequences of Recombinant Phospholipase A2 Receptor 1 (PLA2R1)

All products are for RESEARCH USE ONLY. Not for diagnostic & therapeutic purposes!