

Recombinant Lysophospholipase II (LYPLA2)

Catalog No: tcup6095



Available Sizes

Size: 10ug

Size: 50ug

Size: 200ug



Specifications

Application:

Positive Control; Immunogen; SDS-PAGE; WB.

Species:

Homo sapiens (Human)

Source:

E.coli

Purity / Grade:

> 95%

Amino Acids:

Met1~Thr196

SwissProt:

O95372

Predicted Molecular Weight:

24.5kDa

Observed Molecular Weight:

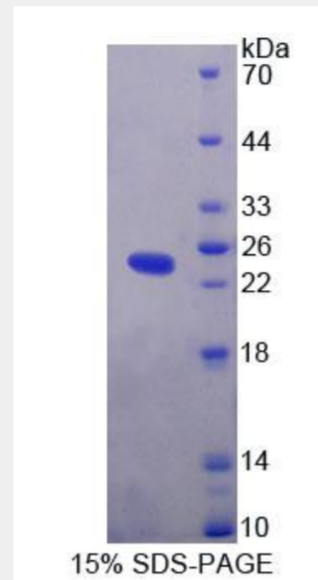
24.5kDa

Tags:

two N-terminal Tags, His-tag and T7-tag

Product Description

Prokaryotic expression



All products are for RESEARCH USE ONLY. Not for diagnostic & therapeutic purposes!