

# Recombinant Phospholipase C Eta 1 (PLCh1)

Catalog No: tcup6092



## Available Sizes

---

**Size:** 10ug

**Size:** 50ug

**Size:** 200ug



## Specifications

---

**Application:**

Positive Control; Immunogen; SDS-PAGE; WB.

**Species:**

Homo sapiens (Human)

**Source:**

E.coli

**Purity / Grade:**

> 90%

**Amino Acids:**

Met1~Ala237

**SwissProt:**

Q4KWH8

**Predicted Molecular Weight:**

31.6kDa

**Observed Molecular Weight:**

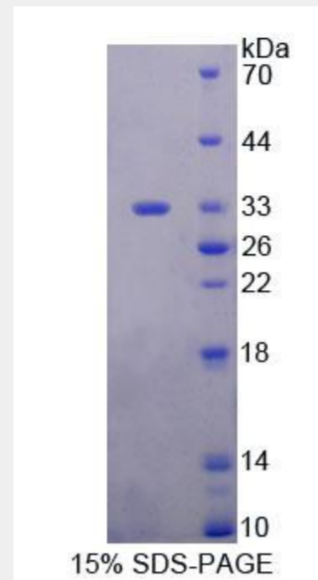
31.6kDa

**Tags:**

two N-terminal Tags, His-tag and T7-tag

## Product Description

Prokaryotic expression



All products are for RESEARCH USE ONLY. Not for diagnostic & therapeutic purposes!