

Recombinant Phospholipase C Eta 2 (PLCh2)

Catalog No: **tcup6091**



Available Sizes

Size: 10ug

Size: 50ug

Size: 200ug



Specifications

Application:

Positive Control; Immunogen; SDS-PAGE; WB.

Species:

Homo sapiens (Human)

Source:

E.coli

Purity / Grade:

> 95%

Amino Acids:

Met1~His257

SwissProt:

O75038

Predicted Molecular Weight:

33.2kDa

Observed Molecular Weight:

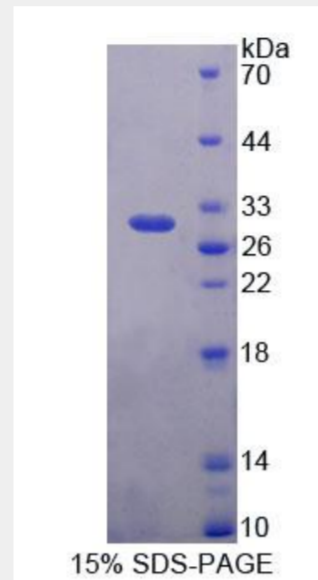
33.2kDa

Tags:

two N-terminal Tags, His-tag and T7-tag

Product Description

Prokaryotic expression



All products are for RESEARCH USE ONLY. Not for diagnostic & therapeutic purposes!