

Recombinant Stromal Cell Derived Factor 2 Like Protein 1 (SDF2L1)

Catalog No: tcup5593



Available Sizes

Size: 10ug

Size: 50ug

Size: 200ug



Specifications

Application:

Positive Control; Immunogen; SDS-PAGE; WB.

Species:

Mus musculus (Mouse)

Source:

E.coli

Purity / Grade:

> 95%

Amino Acids:

Ser29~Leu221

SwissProt:

Q9ESP1

Predicted Molecular Weight:

24.6kDa

Observed Molecular Weight:

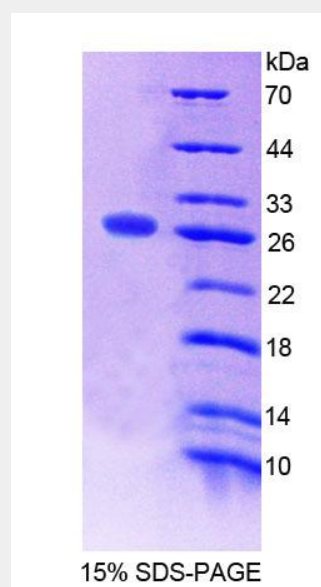
24.6kDa

Tags:

two N-terminal Tags, His-tag and T7-tag

Product Description

Prokaryotic expression



All products are for RESEARCH USE ONLY. Not for diagnostic & therapeutic purposes!