

# Recombinant Retinaldehyde Binding Protein 1 (RLBP1)

Catalog No: tcup5228



## Available Sizes

**Size:** 10ug

**Size:** 50ug

**Size:** 200ug



## Specifications

**Application:**

Positive Control; Immunogen; SDS-PAGE; WB.

**Species:**

Homo sapiens (Human)

**Source:**

E.coli

**Purity / Grade:**

≥ 98%

**Amino Acids:**

Met1~ Phe317

**SwissProt:**

P12271

**Predicted Molecular Weight:**

40.2kDa

**Observed Molecular Weight:**

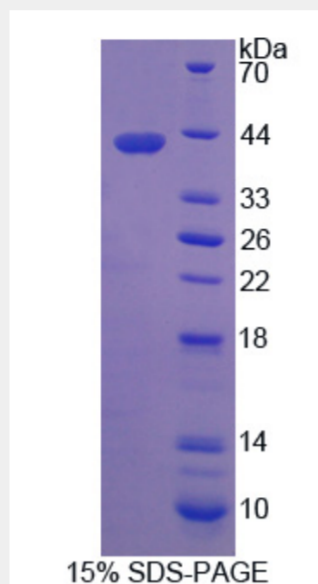
40.2kDa

**Tags:**

two N-terminal tags [his-tag and T7 tag]

## Product Description

Prokaryotic expression



All products are for RESEARCH USE ONLY. Not for diagnostic & therapeutic purposes!