

# Recombinant Polymerase DNA Directed Alpha 1 (POLa1)

Catalog No: **tcup5156**



## Available Sizes

---

**Size:** 10ug

**Size:** 50ug

**Size:** 200ug



## Specifications

---

**Application:**

Positive Control; Immunogen; SDS-PAGE; WB.

**Species:**

Homo sapiens (Human)

**Source:**

E.coli

**Purity / Grade:**

≥ 95%

**Amino Acids:**

Gly1240~Ser1462

**SwissProt:**

P09884

**Predicted Molecular Weight:**

29.5kDa

**Observed Molecular Weight:**

29.5kDa

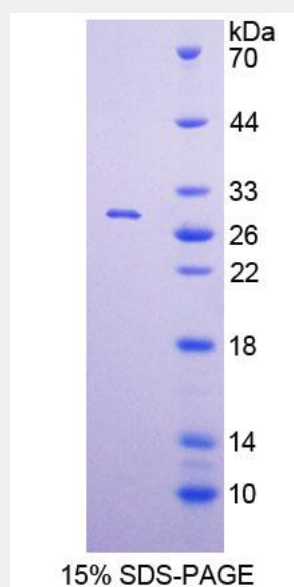
**Tags:**

two N-terminal Tags, His-tag and T7-tag

---

**Product Description**

Prokaryotic expression



All products are for RESEARCH USE ONLY. Not for diagnostic & therapeutic purposes!