

# Recombinant Lysophospholipase I (LYPLA1)

Catalog No: tcup4999



## Available Sizes

---

**Size:** 10ug

**Size:** 50ug

**Size:** 200ug



## Specifications

---

**Application:**

Positive Control; Immunogen; SDS-PAGE; WB.

**Species:**

Mus musculus (Mouse)

**Source:**

E.coli

**Purity / Grade:**

> 95%

**Amino Acids:**

Met1~Asp230

**SwissProt:**

P97823

**Predicted Molecular Weight:**

28.4kDa

**Observed Molecular Weight:**

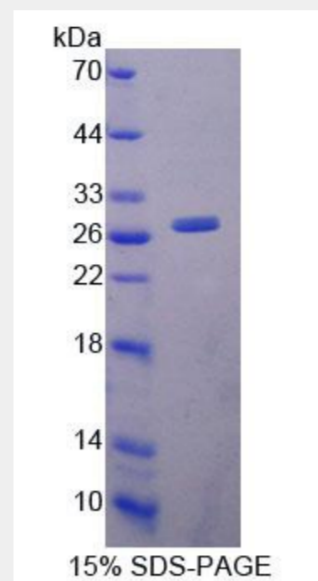
28.4kDa

**Tags:**

two N-terminal Tags, His-tag and T7-tag

## Product Description

Prokaryotic expression



All products are for RESEARCH USE ONLY. Not for diagnostic & therapeutic purposes!