

# Recombinant Lymphocyte Cytosolic Protein 1 (LCP1)

Catalog No: **tcup4979**



## Available Sizes

**Size:** 10ug

**Size:** 50ug

**Size:** 200ug



## Specifications

**Application:**

Positive Control; Immunogen; SDS-PAGE; WB.

**Species:**

Homo sapiens (Human)

**Source:**

E.coli

**Purity / Grade:**

≥ 98%

**Amino Acids:**

Ser5~Lys233

**SwissProt:**

P13796

**Predicted Molecular Weight:**

29.1kDa

**Observed Molecular Weight:**

29.1kDa

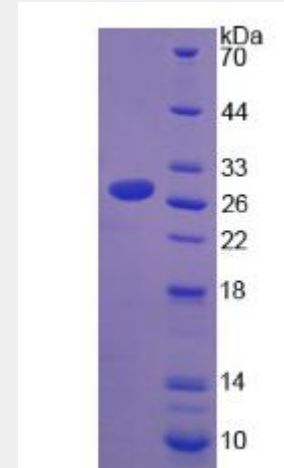
**Tags:**

N-terminal His-Tag

## Product Description

Prokaryotic expression

```
SVSDEE MMELREAFK VDTDGNGYIS FNELNDFKA ACLPLPGYRV  
REITENLMAT GDLDQDGRIS FDEFIKIFHG LKSTDVAKTF RKAINKKEGI  
CAIGGTSEQS SVGTQHSYSE EEKYAFVNW I NKALENDPDC RHVIPMNPNT  
NDLFNAVGDG IVLCKMINLS VPDTIDERTI NKKKLTPTI QENLNLALNS  
ASAIGCHVVN IGAEDLKEGK PYLVLGLLWQ VIK
```



All products are for RESEARCH USE ONLY. Not for diagnostic & therapeutic purposes!