

Recombinant Endothelial Cell Specific Molecule 1 (ESM1)

Catalog No: **tcup4852**



Available Sizes

Size: 10ug

Size: 50ug

Size: 200ug



Specifications

Application:

Positive Control; Immunogen; SDS-PAGE; WB.

Species:

Mus musculus (Mouse)

Source:

E.coli

Purity / Grade:

≥ 98%

Amino Acids:

Ala22~Arg184

SwissProt:

Q9QYY7

Predicted Molecular Weight:

49.7kDa

Observed Molecular Weight:

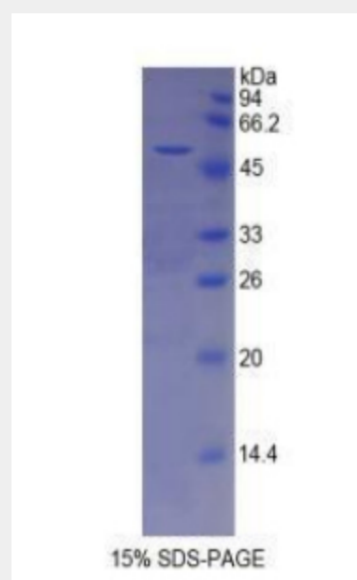
49.7kDa

Tags:

two N-terminal Tags, His-tag and GST-tag

Product Description

Prokaryotic expression



All products are for RESEARCH USE ONLY. Not for diagnostic & therapeutic purposes!