

Recombinant Endothelial Cell Specific Molecule 1 (ESM1)

Catalog No: tcup4851



Available Sizes

Size: 10ug

Size: 50ug

Size: 200ug



Specifications

Application:

Positive Control; Immunogen; SDS-PAGE; WB.

Species:

Mus musculus (Mouse)

Source:

E.coli

Purity / Grade:

≥ 95%

Amino Acids:

Ala22~Arg184

SwissProt:

Q9QYY7

Predicted Molecular Weight:

64.3kDa

Observed Molecular Weight:

64.3kDa

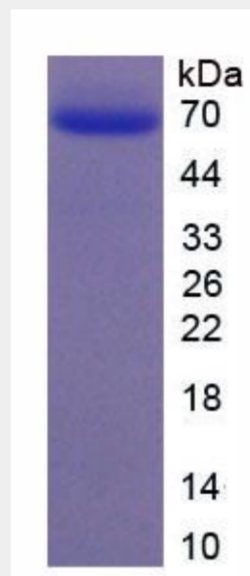
Tags:

two N-terminal Tags, His-tag and MBP-tag

Product Description

Prokaryotic expression

```
AKYAVDCPE HCDKTECRSS LRCKRTLDD  
CGCCQVCAAG PGETCYRTVS GMDGVKCGPG LKCHFYEED DFGDEFGICK  
DCPYGTFGME CKETCNCQSG ICDRVTGRCL DFPFFQYAAA KSPSRTSASH  
TERDSASGDG NAVREEIGEG NAARPSVMKW LNPR
```



All products are for RESEARCH USE ONLY. Not for diagnostic & therapeutic purposes!