

Recombinant Endothelial Cell Specific Molecule 1 (ESM1)

Catalog No: **tcup4850**



Available Sizes

Size: 10ug

Size: 50ug

Size: 200ug



Specifications

Application:

Positive Control; Immunogen; SDS-PAGE; WB.

Species:

Homo sapiens (Human)

Source:

E.coli

Purity / Grade:

≥ 92%

Amino Acids:

Trp20~Arg184

SwissProt:

Q9NQ30

Predicted Molecular Weight:

19.6kDa

Observed Molecular Weight:

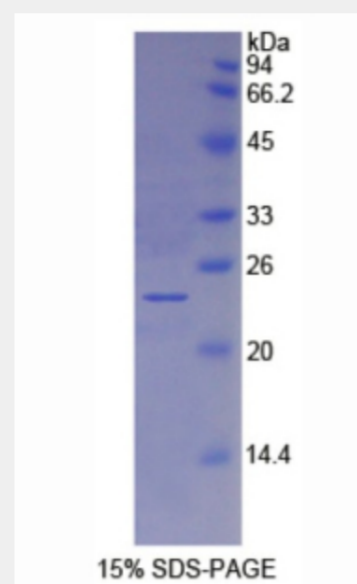
19.6kDa

Tags:

N-terminal His-Tag

Product Description

Prokaryotic expression



All products are for RESEARCH USE ONLY. Not for diagnostic & therapeutic purposes!