

Recombinant Chloride Intracellular Channel Protein 1 (CLIC1)

Catalog No: **tcup4765**



Available Sizes

Size: 10ug

Size: 50ug

Size: 200ug



Specifications

Application:

Positive Control; Immunogen; SDS-PAGE; WB.

Species:

Homo sapiens (Human)

Source:

E.coli

Purity / Grade:

≥ 98%

Amino Acids:

Lys79~Lys241

SwissProt:

O00299

Predicted Molecular Weight:

21.8kDa

Observed Molecular Weight:

21.8kDa

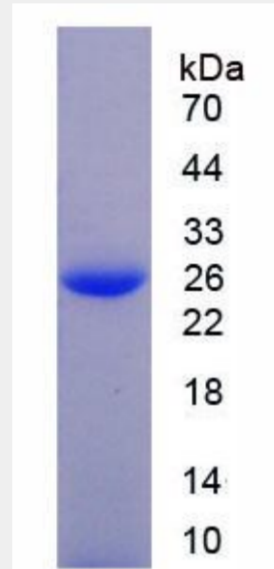
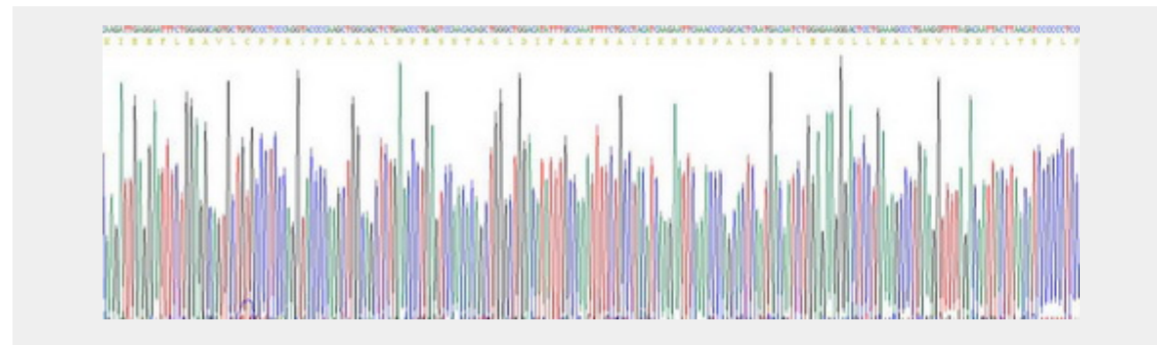
Tags:

two N-terminal Tags, His-tag and T7-tag

Product Description

Prokaryotic expression

```
          KI EEFLEAVLCP PRYPKLAALN
PESNTAGLDI FAKFSAYIKN SNPALNDNLE KGLLKALKVL DNYLTSPLPE
EVDE TSAEDE GVSQRKFLDG NELTLADCNL LPKLHIVQVV CKKYRGFTIP
EAFRGVHRYL SNAYAREEFA STCPDDEEIE LAYEQVAKAL K
```



All products are for RESEARCH USE ONLY. Not for diagnostic & therapeutic purposes!