

Recombinant Cardiotrophin Like Cytokine Factor 1 (CLCF1)

Catalog No: **tcup4764**



Available Sizes

Size: 10ug

Size: 50ug

Size: 200ug



Specifications

Application:

Positive Control; Immunogen; SDS-PAGE; WB.

Species:

Mus musculus (Mouse)

Source:

E.coli

Purity / Grade:

≥ 98%

Amino Acids:

Leu28~Phe225

SwissProt:

Q9QZM3

Predicted Molecular Weight:

26.2kDa

Observed Molecular Weight:

26.2kDa

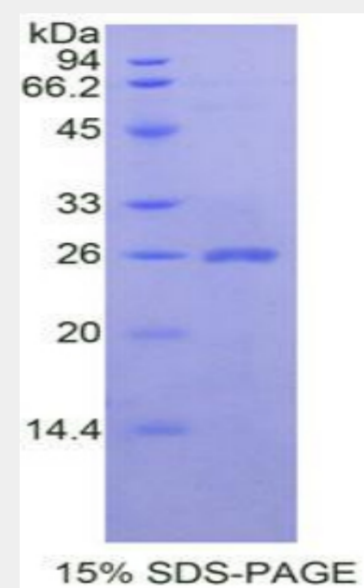
Tags:

two N-terminal Tags, His-tag and T7-tag

Product Description

Prokaryotic expression

```
LNR TGDPGGPSI QKTYDLTRYL
EHQLRSLAGT YLNYLGPPFN EPDFNPPRLG AETLPRATVN LEVWRSLNDR
LRLTQNYEAY SHLLCYLRGL NRQAATAELR RSLAHFCTSL QGLLGSIAGV
MATLGYPLPQ PLPGTEPAWA PGPASDFLQ KMDDFWLLKE LQTLWRSK
DFNRLKKKMQ PPAASVTLHL EAHGF
```



All products are for RESEARCH USE ONLY. Not for diagnostic & therapeutic purposes!