

Recombinant Cytokine Inducible SH2 Containing Protein (CISH)

Catalog No: tcup4757



Available Sizes

Size: 10ug

Size: 50ug

Size: 200ug



Specifications

Application:

Positive Control; Immunogen; SDS-PAGE; WB.

Species:

Homo sapiens (Human)

Source:

E.coli

Purity / Grade:

> 90%

Amino Acids:

Met1~Leu258

SwissProt:

Q9NSE2

Predicted Molecular Weight:

32.4kDa

Observed Molecular Weight:

32.4kDa

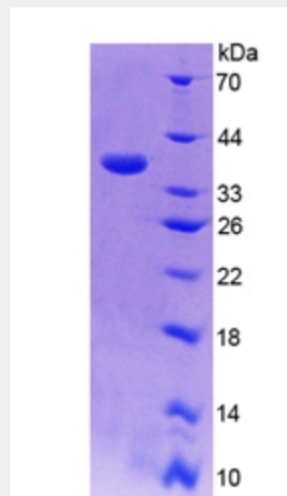
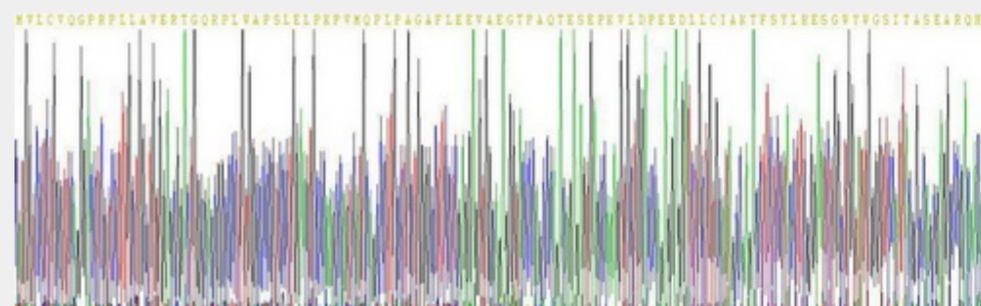
Tags:

two N-terminal Tags, His-tag and T7-tag

Product Description

Prokaryotic expression

```
MVLCVQGPRP LLAVERTGQR PLWAPSLELP KPVMQPLPAG AFLEEVAEGT  
PAQTESEPKV LDPEEDLLCI AKTFSYLRES GWYWGSITAS EARQHLQKMP  
EGTFLVRDST HPSYLFILSV KTRRGPTNVR IEYADSSFRL DSNCLSRPRI  
LAFPDVSVLV QHYVASCTAD TRSDSPDPAP TPALPMPKED APSDPALPAP  
PPATAVHLKL VQPFVRRSSA RSLQHLCLRV INRLVADVDC LPLPRRMADY  
LRQYPFQL
```



All products are for RESEARCH USE ONLY. Not for diagnostic & therapeutic purposes!