

Recombinant Laminin Gamma 1 (LAMC1)

Catalog No: tcup4376



Available Sizes

Size: 10ug

Size: 50ug

Size: 200ug



Specifications

Application:

Positive Control; Immunogen; SDS-PAGE; WB.

Species:

Homo sapiens (Human)

Source:

E.coli

Purity / Grade:

≥ 98%

Amino Acids:

Ile521~Pro772

SwissProt:

P11047

Predicted Molecular Weight:

29.0kDa

Observed Molecular Weight:

29.0kDa

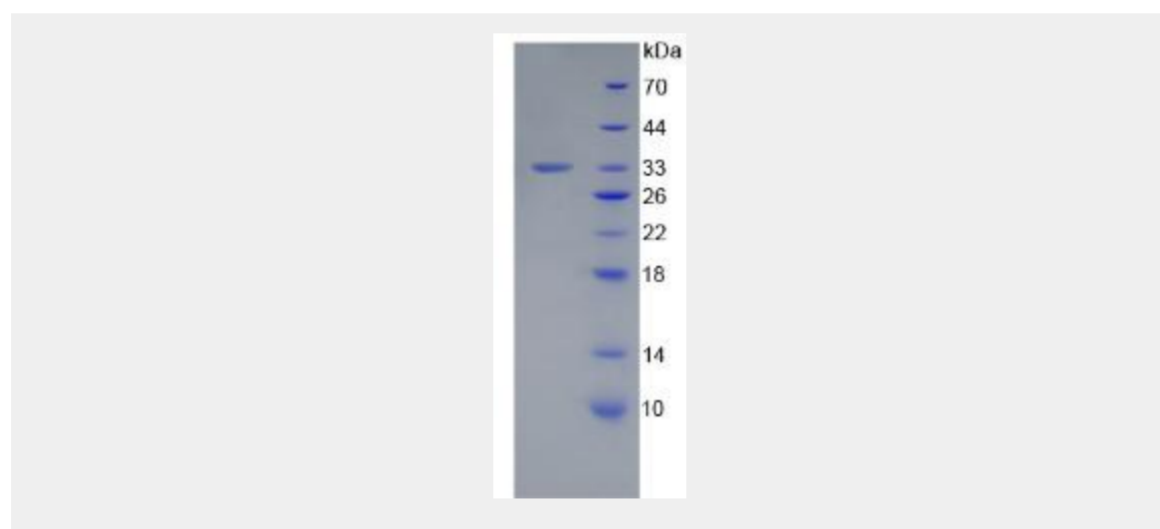
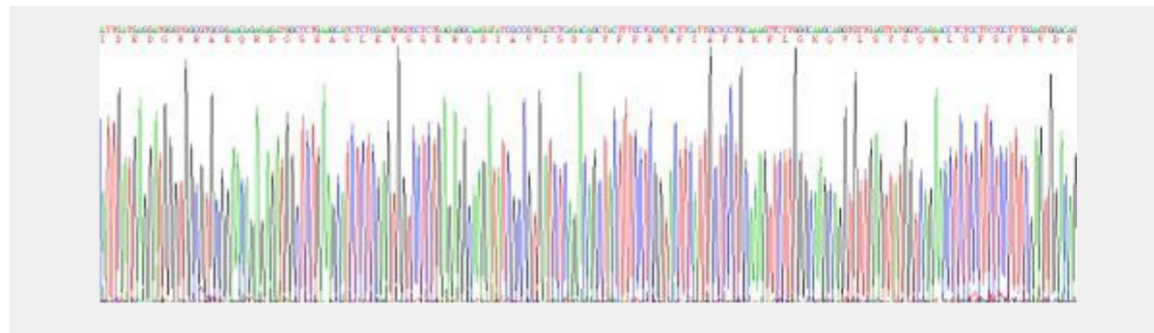
Tags:

N-terminal His-Tag

Product Description

Prokaryotic expression

```
          IDEDGWRAEQ RDGSEASLEW SSERQDIAVI  
SDSYFPRYFI APAKFLGKQV LSYGQNLFSF FRVDRRTRL SAEDLVLEGA  
GLRVSVPLIA QGNSYPSETT VKYVFRLEHA TDYPWRPALT PFEFQKLLNN  
LTSIKIRGTY SERSAGYLLD VTLASARPGP GVPATWVESC TCPVGYGGQF  
CEMCLSGYRR ETPNLGPYSP CVLCACNGHS ETCDPETGVC NCRDNTAGPH  
CEKCSGGYYG DSTAGTSSDC QP
```



All products are for RESEARCH USE ONLY. Not for diagnostic & therapeutic purposes!