

Recombinant Laminin Beta 2 (LAMb2)

Catalog No: tcup4368



Available Sizes

Size: 10ug

Size: 50ug

Size: 200ug



Specifications

Application:

Positive Control; Immunogen; SDS-PAGE; WB.

Species:

Rattus norvegicus (Rat)

Source:

E.coli

Purity / Grade:

≥ 95%

Amino Acids:

Gln939~Ser1129

SwissProt:

P15800

Predicted Molecular Weight:

24.3kDa

Observed Molecular Weight:

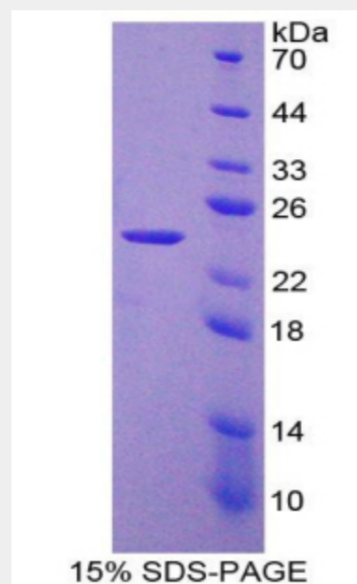
24.3kDa

Tags:

two N-terminal Tags, His-tag and T7-tag

Product Description

Prokaryotic expression



All products are for RESEARCH USE ONLY. Not for diagnostic & therapeutic purposes!