

Recombinant Laminin Beta 2 (LAMb2)

Catalog No: tcup4364



Available Sizes

Size: 10ug

Size: 50ug

Size: 200ug



Specifications

Application:

Positive Control; Immunogen; SDS-PAGE; WB.

Species:

Homo sapiens (Human)

Source:

E.coli

Purity / Grade:

≥ 92%

Amino Acids:

Asp38~His350

SwissProt:

P55268

Predicted Molecular Weight:

65.5kDa

Observed Molecular Weight:

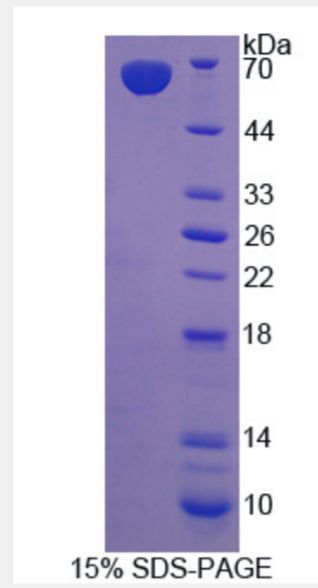
65.5kDa

Tags:

two N-terminal Tags, His-tag and GST-tag

Product Description

Prokaryotic expression



All products are for RESEARCH USE ONLY. Not for diagnostic & therapeutic purposes!