

Recombinant Leucine Rich Alpha 2 Glycoprotein 1 (LRG1)

Catalog No: **tcup4061**



Available Sizes

Size: 10ug

Size: 50ug

Size: 200ug



Specifications

Application:

Positive Control; Immunogen; SDS-PAGE; WB.

Species:

Rattus norvegicus (Rat)

Source:

E.coli

Purity / Grade:

≥ 98%

Amino Acids:

Cys39~Asn308

SwissProt:

Q5I0E1

Predicted Molecular Weight:

33.49kDa

Observed Molecular Weight:

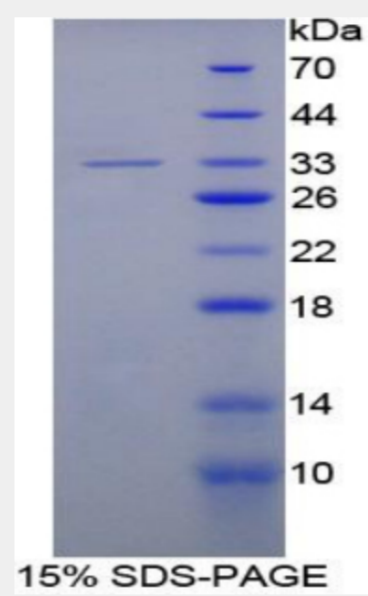
33.49kDa

Tags:

two N-terminal Tags, His-tag and T7-tag

Product Description

Prokaryotic expression



All products are for RESEARCH USE ONLY. Not for diagnostic & therapeutic purposes!