

Recombinant Leucine Rich Alpha 2 Glycoprotein 1 (LRG1)

Catalog No: **tcup4060**



Available Sizes

Size: 10ug

Size: 50ug

Size: 200ug



Specifications

Application:

Positive Control; Immunogen; SDS-PAGE; WB.

Species:

Rattus norvegicus (Rat)

Source:

E.coli

Purity / Grade:

≥ 95%

Amino Acids:

Leu154~Leu332

SwissProt:

Q5I0E1

Predicted Molecular Weight:

46.9kDa

Observed Molecular Weight:

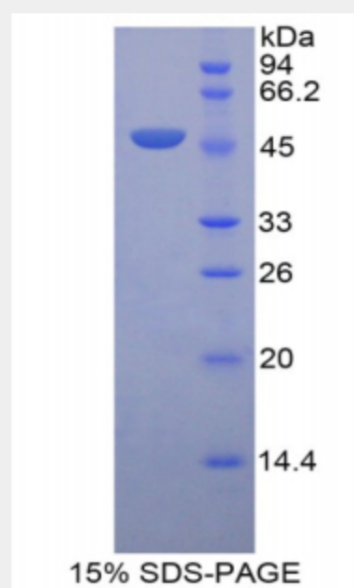
46.9kDa

Tags:

two N-terminal Tags, His-tag and GST-tag

Product Description

Prokaryotic expression



All products are for RESEARCH USE ONLY. Not for diagnostic & therapeutic purposes!