

Recombinant Choline Transporter Like Protein 1 (CTL1)

Catalog No: **tcup3919**



Available Sizes

Size: 10ug

Size: 50ug

Size: 200ug



Specifications

Application:

Positive Control; Immunogen; SDS-PAGE; WB.

Species:

Homo sapiens (Human)

Source:

E.coli

Purity / Grade:

≥ 95%

Amino Acids:

Thr74~Cys183

SwissProt:

Q8WWI5

Predicted Molecular Weight:

42.1kDa

Observed Molecular Weight:

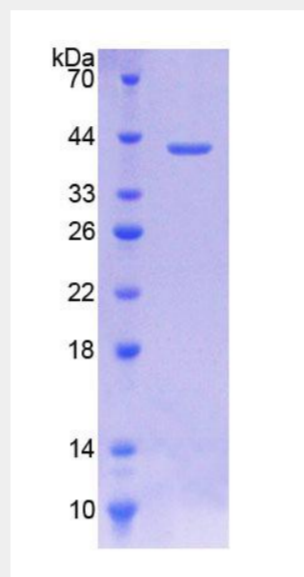
42.1kDa

Tags:

two N-terminal Tags, His-tag and GST-tag

Product Description

Prokaryotic expression



All products are for RESEARCH USE ONLY. Not for diagnostic & therapeutic purposes!