

Recombinant Regenerating Islet Derived Protein 1 Alpha (REG1a)

Catalog No: tcup3735



Available Sizes

Size: 10ug

Size: 50ug

Size: 200ug



Specifications

Application:

Positive Control; Immunogen; SDS-PAGE; WB.

Species:

Mus musculus (Mouse)

Source:

E.coli

Purity / Grade:

≥ 95%

Amino Acids:

Leu10~Gly165

SwissProt:

P43137

Predicted Molecular Weight:

47.44kDa

Observed Molecular Weight:

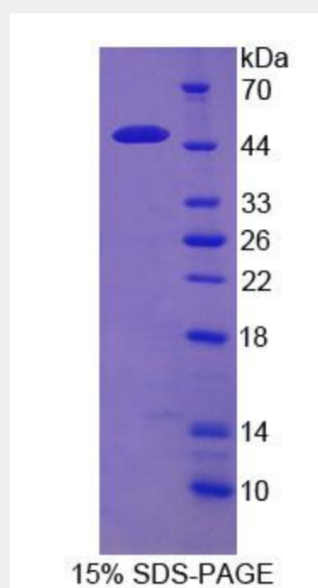
47.44kDa

Tags:

two N-terminal Tags, His-tag and GST-tag

Product Description

Prokaryotic expression



All products are for RESEARCH USE ONLY. Not for diagnostic & therapeutic purposes!