

Recombinant Kruppel Like Factor 5, Intestinal (KLF5)

Catalog No: **tcup3648**



Available Sizes

Size: 10ug

Size: 50ug

Size: 200ug



Specifications

Application:

Positive Control; Immunogen; SDS-PAGE; WB.

Species:

Homo sapiens (Human)

Source:

E.coli

Purity / Grade:

≥ 95%

Amino Acids:

Asp216~Asn457

SwissProt:

Q13887

Predicted Molecular Weight:

30.9kDa

Observed Molecular Weight:

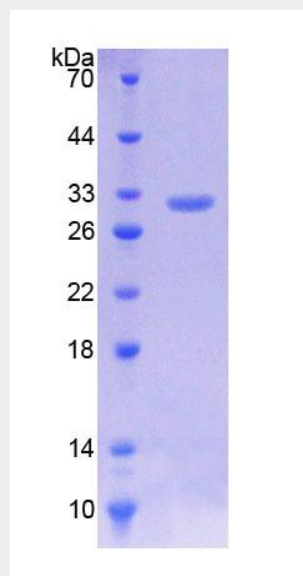
30.9kDa

Tags:

two N-terminal Tags, His-tag and T7-tag

Product Description

Prokaryotic expression



All products are for RESEARCH USE ONLY. Not for diagnostic & therapeutic purposes!