

Recombinant Phospholipase A2, Cytosolic (cPLA2)

Catalog No: tcup3498



Available Sizes

Size: 10ug

Size: 50ug

Size: 200ug



Specifications

Application:

Positive Control; Immunogen; SDS-PAGE; WB.

Species:

Homo sapiens (Human)

Source:

E.coli

Purity / Grade:

≥ 92%

Amino Acids:

Met1~Ser178

SwissProt:

P47712

Predicted Molecular Weight:

22.2kDa

Observed Molecular Weight:

22.2kDa

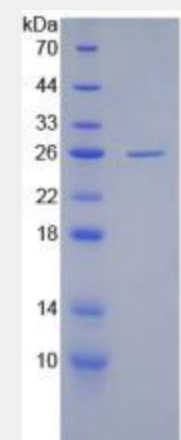
Tags:

N-terminal His-Tag

Product Description

Prokaryotic expression

```
MSFIDPYQHI IVEHQYSHKF TVVLRATKV TKGAFDMLD TDPYVELFI  
STTPDSRKRT RHFNDINPV WNETFEFILD PNQENVLEIT LMDANYVMDE  
TLGTATFTVS SMKVGEKKEV PFIFNQVTEM VLEMSLEVCS CPDLRFSMAL  
CDQEKTRQQ RKEHIRESMK KLLGPKNS
```



All products are for RESEARCH USE ONLY. Not for diagnostic & therapeutic purposes!