

Recombinant Cytohesin 1 (CYTH1)

Catalog No: **tcup3418**



Available Sizes

Size: 10ug

Size: 50ug

Size: 200ug



Specifications

Application:

Positive Control; Immunogen; SDS-PAGE; WB.

Species:

Homo sapiens (Human)

Source:

E.coli

Purity / Grade:

≥ 85%

Amino Acids:

Met1~His398

SwissProt:

Q15438

Predicted Molecular Weight:

50.1kDa

Observed Molecular Weight:

50.1kDa

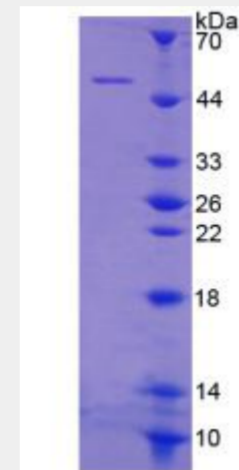
Tags:

two N-terminal Tags, His-tag and T7-tag

Product Description

Prokaryotic expression

```
MEEDSYVPS DLTAERQEL ENIRRRKQEL LADIQLKDE IAEVANEIEN
LGSTEERKNM QRNKQVAMGR KKFNMDPKKG IQFLIENDLL KNTCEDIAQF
LYKGEGLNKT AIGDYLGERD EFNIQVLHAF VELHEFTDLN LVQALRQFLW
SFRLPGEAQK IDRMMEAFQ RYCQCNGVF QSTDTCYVLS FAIIMLNTSL
HNPVVKDKPT VERFIAMNRG INDGGDLPEE LLRNLYESIK NEPFKIPEDD
GNDLHTFFN PDREGWLLKL GGGRVKTWKR RWFILTDNCL YYFEYTTDKE
PRGIIPLENL SIREVEDSKK PNCFELYIPD NKDQVIKACK TEADGRVVEG
NHTVYRISAP TPEEKEEWIK CIKAAISRDP FYEMLAARKK KVSSTKRH
```



All products are for RESEARCH USE ONLY. Not for diagnostic & therapeutic purposes!