

Recombinant Killer Cell Immunoglobulin Like Receptor 2DL1 (KIR2DL1)

Catalog No: tcup3305



Available Sizes

Size: 10ug

Size: 50ug

Size: 200ug



Specifications

Application:

Positive Control; Immunogen; SDS-PAGE; WB.

Species:

Homo sapiens (Human)

Source:

E.coli

Purity / Grade:

≥ 98%

Amino Acids:

His22~Pro348

SwissProt:

P43626

Predicted Molecular Weight:

66.32kDa

Observed Molecular Weight:

66.32kDa

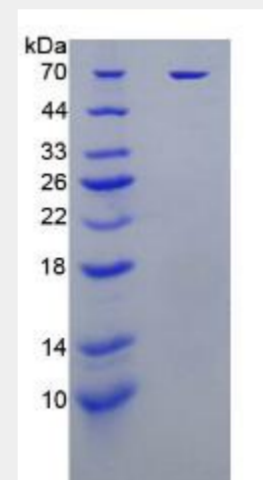
Tags:

two N-terminal Tags, His-tag and GST-tag

Product Description

Prokaryotic expression

```
                HEGVHRKPS LLAHPGPLVK SEETVILQCW  
SDVMFEHFLH HREGMFNDL RLIGEHHDGV SKANFSISRM TQDLAGTYRC  
YGSVTHSPYQ VSAPSDPLDI VIIGLYEKPS LSAQPGPTVL AGENVTLSCS  
SRSSYDMYHL SREGEAHERR LPAGPKVNGT FQADFPLGPA THGGTYRCFG  
SFHDSPYEWS KSSDPLLVSV TGNPSNSWPS PTEPSSKTGN PRHLHILIGT  
SVVILFILL FLLHRWCSN KKNAAVMDQE SAGNRTANSE DSDEQDPQEV  
TYTQLNHCVF TQRKITRPSQ RPKTPPTDII VYTELPNAES RSKVVSCP
```



All products are for RESEARCH USE ONLY. Not for diagnostic & therapeutic purposes!