

Recombinant Sorbitol Dehydrogenase (SDH)

Catalog No: tcup3280



Available Sizes

Size: 10ug

Size: 50ug

Size: 200ug



Specifications

Application:

Positive Control; Immunogen; SDS-PAGE; WB.

Species:

Rattus norvegicus (Rat)

Source:

E.coli

Purity / Grade:

≥ 98%

Amino Acids:

Ala2~Pro357

SwissProt:

P27867

Predicted Molecular Weight:

41.8kDa

Observed Molecular Weight:

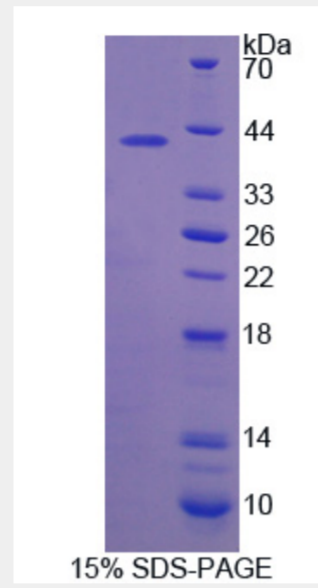
41.8kDa

Tags:

N-terminal His-Tag

Product Description

Prokaryotic expression



All products are for RESEARCH USE ONLY. Not for diagnostic & therapeutic purposes!