

Recombinant Sorbitol Dehydrogenase (SDH)

Catalog No: **tcup3278**



Available Sizes

Size: 10ug

Size: 50ug

Size: 200ug



Specifications

Application:

Positive Control; Immunogen; SDS-PAGE; WB.

Species:

Bos taurus; Bovine (Cattle)

Source:

E.coli

Purity / Grade:

≥ 95%

Amino Acids:

Ala4~Lys344

SwissProt:

Q58D31

Predicted Molecular Weight:

40.2kDa

Observed Molecular Weight:

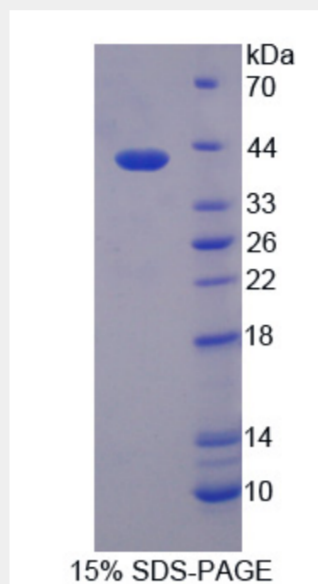
40.2kDa

Tags:

N-terminal His-Tag

Product Description

Prokaryotic expression



All products are for RESEARCH USE ONLY. Not for diagnostic & therapeutic purposes!