

Recombinant Adenylyl Cyclase Associated Protein 1 (CAP1)

Catalog No: **tcup3003**



Available Sizes

Size: 10ug

Size: 50ug

Size: 200ug



Specifications

Application:

Positive Control; Immunogen; SDS-PAGE; WB.

Species:

Homo sapiens (Human)

Source:

E.coli

Purity / Grade:

≥ 95%

Amino Acids:

Ala38~Lys149

SwissProt:

Q01518

Predicted Molecular Weight:

13.6kDa

Observed Molecular Weight:

13.6kDa

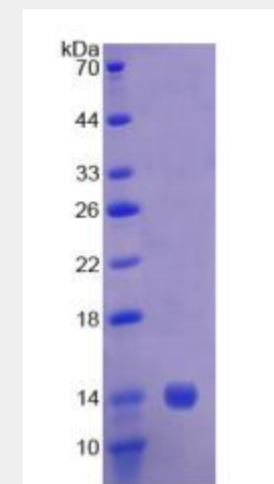
Tags:

N-terminal His-Tag

Product Description

Prokaryotic expression

AGA APYVQAFDSL
LAGPVAEYLK ISKEIGGDVQ KHAEMVHTGL KLERALLVTA SQCQQAENK
LSDLLAPISE QIKEVITFRE KNRGSKLFNH LSAVSESIQA LGWVAMAPK



All products are for RESEARCH USE ONLY. Not for diagnostic & therapeutic purposes!