

Recombinant Secretory Leukocyte Peptidase Inhibitor (SLPI)

Catalog No: **tcup2939**



Available Sizes

Size: 10ug

Size: 50ug

Size: 200ug



Specifications

Application:

Positive Control; Immunogen; SDS-PAGE; WB.

Species:

Mus musculus (Mouse)

Source:

E.coli

Purity / Grade:

≥ 98%

Amino Acids:

Pro20~Met131

SwissProt:

P97430

Predicted Molecular Weight:

18.1kDa

Observed Molecular Weight:

18.1kDa

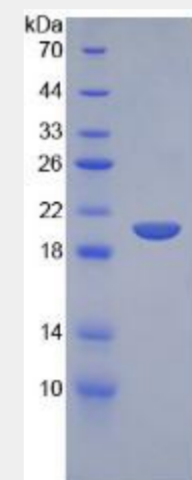
Tags:

two N-terminal Tags, His-tag and S-tag

Product Description

Prokaryotic expression

```
      P WTVEGGKNDK IKIGACPAKK PAQCLKLEKP  
QCRTDWECPG KQRCCQDAG SKCVNPVPIR KPVWRKPGRC VKTQARCML  
NPPNVCQRDG QCDGKYKCE GICGKVCLPP M
```



All products are for RESEARCH USE ONLY. Not for diagnostic & therapeutic purposes!