

Recombinant Epithelial Cell Adhesion Molecule (EPCAM)

Catalog No: **tcup2893**



Available Sizes

Size: 10ug

Size: 50ug

Size: 200ug



Specifications

Application:

Positive Control; Immunogen; SDS-PAGE; WB.

Species:

Chicken (Gallus)

Source:

E.coli

Purity / Grade:

≥ 98%

Amino Acids:

Asp21~Gly260

SwissProt:

Q5F381

Predicted Molecular Weight:

32.2kDa

Observed Molecular Weight:

32.2kDa

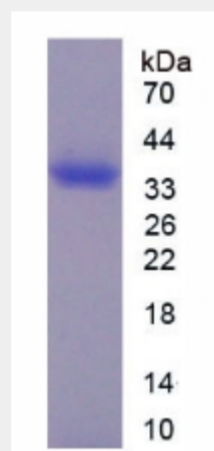
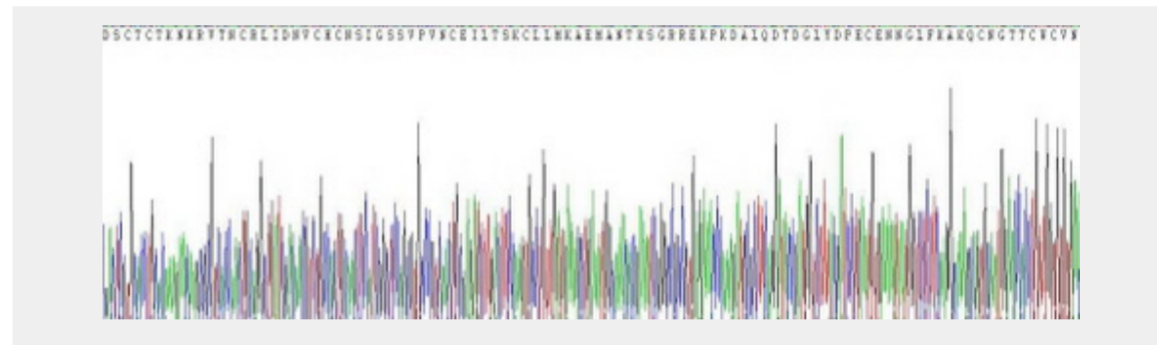
Tags:

two N-terminal Tags, His-tag and T7-tag

Product Description

Prokaryotic expression

```
DSCTCTKNKR VTNCRLLIDNV CHCNSIGSSV
PVNCEILTSK CLLMKAEMAN TKSGRREKPK DALQD TDGLY DPECENNGLF
KAKQCNGTTC WCVNTAGVRR TDKHDTDLKC NQLVRTTWII IEMRHAERKT
PLNAESLTRY LKDTITSRYM LDGRYISGVV YENPTITIDL KQNSSDKTPG
DVDITDVAYY FEKDVKDDSI FLNNKLNMI DNEELKFDNM MVVYVDEVPP
EFSMKSLTAG LEHHHHHH
```



All products are for RESEARCH USE ONLY. Not for diagnostic & therapeutic purposes!