

# Recombinant Kruppel Like Factor 4, Gut (KLF4)

Catalog No: **tcup2815**



## Available Sizes

---

**Size:** 10ug

**Size:** 50ug

**Size:** 200ug



## Specifications

---

**Application:**

Positive Control; Immunogen; SDS-PAGE; WB.

**Species:**

Homo sapiens (Human)

**Source:**

E.coli

**Purity / Grade:**

≥ 92%

**Amino Acids:**

Leu187~His474

**SwissProt:**

O43474

**Predicted Molecular Weight:**

35.3kDa

**Observed Molecular Weight:**

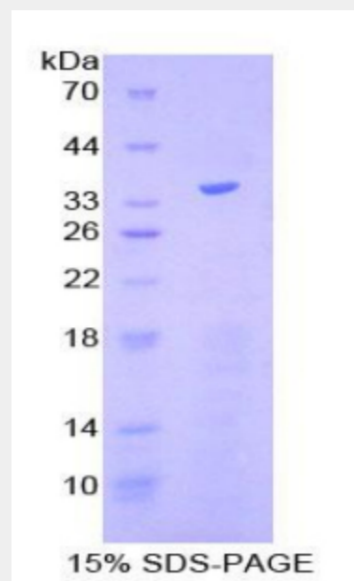
35.3kDa

**Tags:**

two N-terminal Tags, His-tag and T7-tag

## Product Description

Prokaryotic expression



All products are for RESEARCH USE ONLY. Not for diagnostic & therapeutic purposes!