

Recombinant C Type Lectin Domain Family 2, Member C (CLEC2C)

Catalog No: **tcup2742**



Available Sizes

Size: 10ug

Size: 50ug

Size: 200ug



Specifications

Application:

Positive Control; Immunogen; SDS-PAGE; WB.

Species:

Rattus norvegicus (Rat)

Source:

E.coli

Purity / Grade:

≥ 95%

Amino Acids:

Cys43~Glu187

SwissProt:

Q5M851

Predicted Molecular Weight:

20.1kDa

Observed Molecular Weight:

20.1kDa

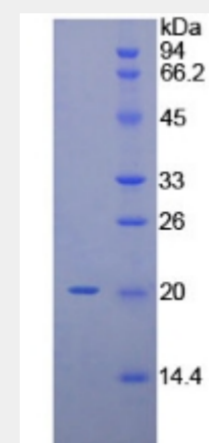
Tags:

two N-terminal Tags, His-tag and T7-tag

Product Description

Prokaryotic expression

```
ITSLIIALFA LSVGKYNCPG FYENLESDH HAASCKNEWF SYNGKCYFFS  
TTTKTWALAQ KSCSEDDATL AVIDSEKDMA FLKRYAGGLK HWIGLRNEAS  
QWQWANGKE FNSWFNVTGS KKCIVSLNHTD VASVDCE  
CAVLVVVL
```



All products are for RESEARCH USE ONLY. Not for diagnostic & therapeutic purposes!