

Recombinant Leukocyte Immunoglobulin Like Receptor Subfamily B, Member 2 (LILRB2)

Catalog No: tcup2650



Available Sizes

Size: 10ug

Size: 50ug

Size: 200ug



Specifications

Application:

Positive Control; Immunogen; SDS-PAGE; WB.

Species:

Homo sapiens (Human)

Source:

E.coli

Purity / Grade:

≥ 98%

Amino Acids:

Leu53~Val255

SwissProt:

Q8N423

Predicted Molecular Weight:

26.4kDa

Observed Molecular Weight:

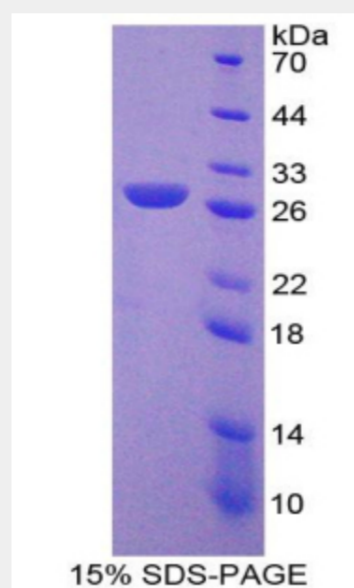
26.4kDa

Tags:

two N-terminal Tags, His-tag and T7-tag

Product Description

Prokaryotic expression



All products are for RESEARCH USE ONLY. Not for diagnostic & therapeutic purposes!