

Recombinant Myosin Light Chain 1, Alkali, Fast Skeletal (MYL1)

Catalog No: tcup2603



Available Sizes

Size: 10ug

Size: 50ug

Size: 200ug



Specifications

Application:

Positive Control; Immunogen; SDS-PAGE; WB.

Species:

Rattus norvegicus (Rat)

Source:

E.coli

Purity / Grade:

≥ 98%

Amino Acids:

Phe3~Asn139

SwissProt:

P02600

Predicted Molecular Weight:

16.3kDa

Observed Molecular Weight:

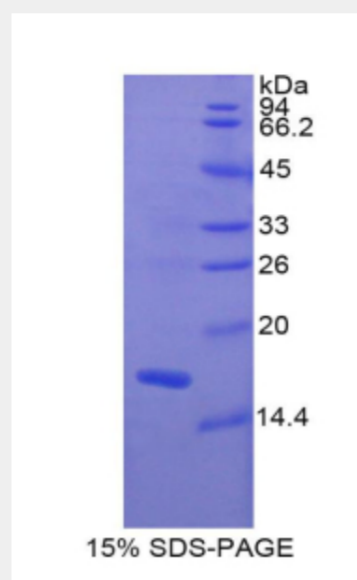
16.3kDa

Tags:

N-terminal His-Tag

Product Description

Prokaryotic expression



All products are for RESEARCH USE ONLY. Not for diagnostic & therapeutic purposes!