

# Recombinant Myosin Light Chain 1, Alkali, Fast Skeletal (MYL1)

Catalog No: tcup2602



## Available Sizes

---

**Size:** 10ug

**Size:** 50ug

**Size:** 200ug



## Specifications

---

**Application:**

Positive Control; Immunogen; SDS-PAGE; WB.

**Species:**

Homo sapiens (Human)

**Source:**

E.coli

**Purity / Grade:**

≥ 98%

**Amino Acids:**

Phe3~Ala142

**SwissProt:**

P05976

**Predicted Molecular Weight:**

16.8kDa

**Observed Molecular Weight:**

16.8kDa

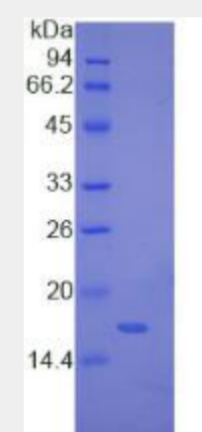
**Tags:**

N-terminal His-Tag

**Product Description**

Prokaryotic expression

```
FSADQIAE FKEAFLLFDR TGDSKITLSQ VGDVLRALGT NPTNAEVRKV  
LGNPSNEELN AKKIEFEQFL PMMQAISNNK DQATYEDFVE GLRVFDKEGN  
GTVMGAE LRH VLATLGEKMK EEEVEALMAG QEDSNGCINY EA
```



All products are for RESEARCH USE ONLY. Not for diagnostic & therapeutic purposes!