

Recombinant Myosin Light Chain 2, Regulatory, Cardiac (MYL2)

Catalog No: tcup2600



Available Sizes

Size: 10ug

Size: 50ug

Size: 200ug



Specifications

Application:

Positive Control; Immunogen; SDS-PAGE; WB.

Species:

Homo sapiens (Human)

Source:

E.coli

Purity / Grade:

≥ 95%

Amino Acids:

Ala2~Ile159

SwissProt:

P10916

Predicted Molecular Weight:

19.4kDa

Observed Molecular Weight:

19.4kDa

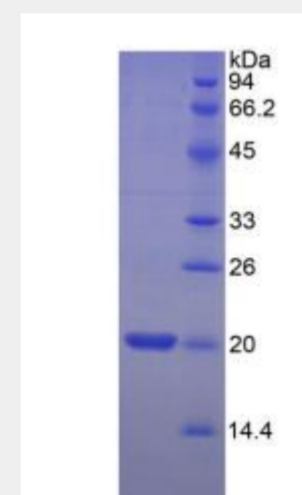
Tags:

N-terminal His-Tag

Product Description

Prokaryotic expression

```
APKKAKKRA GGANSNVFSM FEQTQIQEFK EAFTIMDQNR DGFIDKNDLR  
DTFAALGRVN VKNEEIDEMI KEAPGPINFV VFLTMFGEKL KGADPEETIL  
NAFKVFDPEG KGVLKADYVR EMLTTQAERF SKEEVDQMFA AFPPDVTGNL  
DYKNLVHII
```



All products are for RESEARCH USE ONLY. Not for diagnostic & therapeutic purposes!