

Recombinant Ubiquitin Activating Enzyme E1 Like Protein (UBE1L)

Catalog No: tcup2463



Available Sizes

Size: 10ug

Size: 50ug

Size: 200ug



Specifications

Application:

Positive Control; Immunogen; SDS-PAGE; WB.

Species:

Rattus norvegicus (Rat)

Source:

E.coli

Purity / Grade:

≥ 92%

Amino Acids:

Arg249~Ser517

SwissProt:

D3ZEU5

Predicted Molecular Weight:

33.6kDa

Observed Molecular Weight:

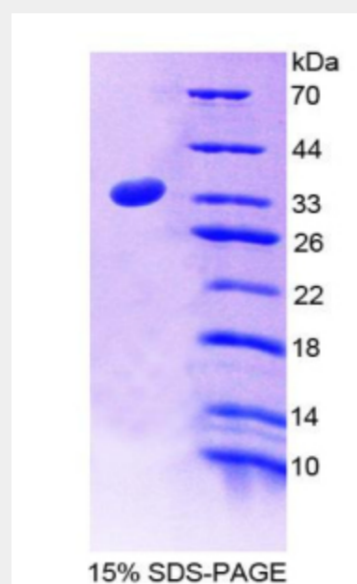
33.6kDa

Tags:

two N-terminal Tags, His-tag and T7-tag

Product Description

Prokaryotic expression



All products are for RESEARCH USE ONLY. Not for diagnostic & therapeutic purposes!