

Recombinant L1 Cell Adhesion Molecule (L1CAM)

Catalog No: tcup2350



Available Sizes

Size: 10ug

Size: 50ug

Size: 200ug



Specifications

Application:

Positive Control; Immunogen; SDS-PAGE; WB.

Species:

Mus musculus (Mouse)

Source:

E.coli

Purity / Grade:

≥ 98%

Amino Acids:

Ser882~Ala1132

SwissProt:

P11627

Predicted Molecular Weight:

59.9kDa

Observed Molecular Weight:

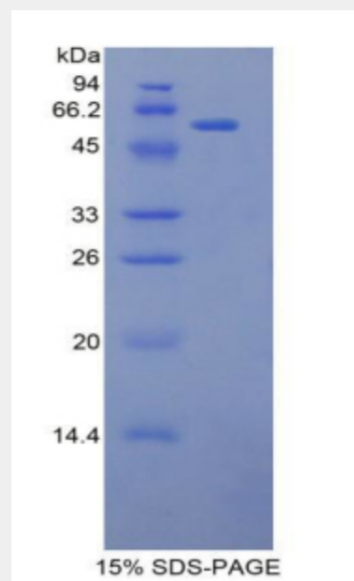
59.9kDa

Tags:

two N-terminal Tags, His-tag and GST-tag

Product Description

Prokaryotic expression



All products are for RESEARCH USE ONLY. Not for diagnostic & therapeutic purposes!