

Recombinant L1 Cell Adhesion Molecule (L1CAM)

Catalog No: tcup2348



Available Sizes

Size: 10ug

Size: 50ug

Size: 200ug



Specifications

Application:

Positive Control; Immunogen; SDS-PAGE; WB.

Species:

Homo sapiens (Human)

Source:

E.coli

Purity / Grade:

≥ 95%

Amino Acids:

Thr218~Gln423

SwissProt:

P32004

Predicted Molecular Weight:

24.8kDa

Observed Molecular Weight:

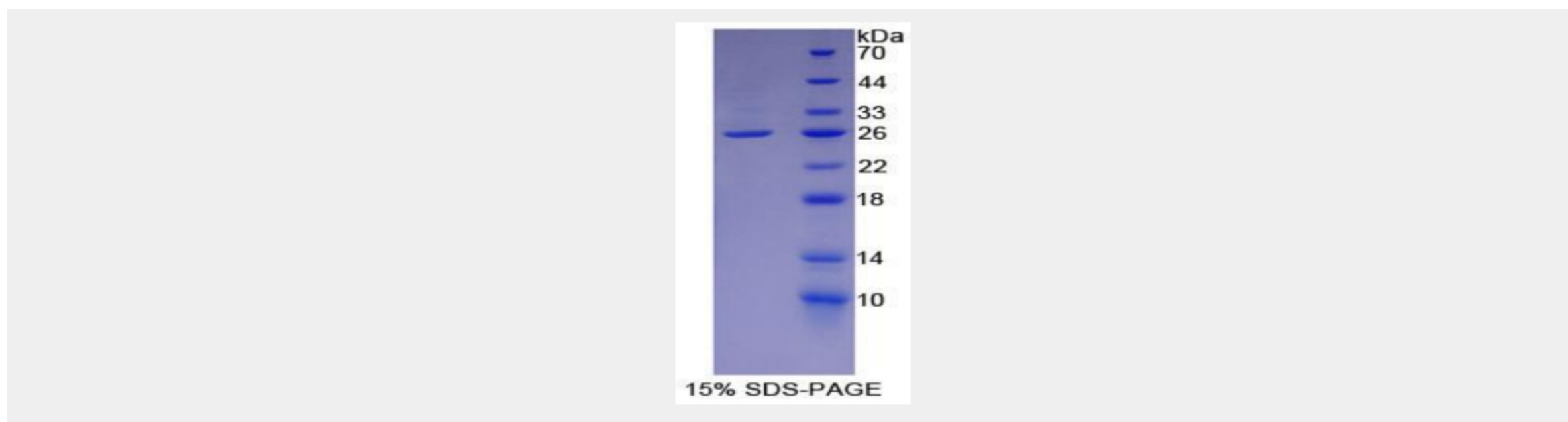
24.8kDa

Tags:

N-terminal His-Tag

Product Description

Prokaryotic expression



All products are for RESEARCH USE ONLY. Not for diagnostic & therapeutic purposes!