

Recombinant Von Willebrand Factor Cleaving Protease (vWFCP)

Catalog No: **tcup2334**



Available Sizes

Size: 10ug

Size: 50ug

Size: 200ug



Specifications

Application:

Positive Control; Immunogen; SDS-PAGE; WB.

Species:

Homo sapiens (Human)

Source:

E.coli

Purity / Grade:

> 95%

Amino Acids:

Val896~Val1131

SwissProt:

Q76LX8

Predicted Molecular Weight:

55.4kDa

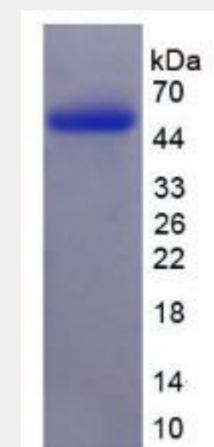
Observed Molecular Weight:

55.4kDa

Product Description

Prokaryotic expression

```
                                VWTPA
AGSCSVSCGR GLMELRFLCM DSALRVPVQE ELCGLASKPG SRREVCQAVP
CPARWQYKLA ACSVSCGRGV VRRILYCARA HGEDDGEEIL LDTQCQGLPR
PEPQEACSL E PCPPRWKVM LGPCSASCGL GTARRSVACV QLDQGQDVEV
DEAACAALVR PEASVPCLIA DCTYRWHVGT WMECSVSCGD GIQRRRDTC L
GPQAQAPVPA DFCQHLPKPV TVRGCHWAGPC V
```



All products are for RESEARCH USE ONLY. Not for diagnostic & therapeutic purposes!