

Recombinant Phospholipase A2, Lipoprotein Associated (LpPLA2)

Catalog No: tcup2205



Available Sizes

Size: 10ug

Size: 50ug

Size: 200ug



Specifications

Application:

Positive Control; Immunogen; SDS-PAGE; WB.

Species:

Mus musculus (Mouse)

Source:

E.coli

Purity / Grade:

≥ 95%

Amino Acids:

Phe22~Asn440

SwissProt:

Q60963

Predicted Molecular Weight:

49.1kDa

Observed Molecular Weight:

49.1kDa

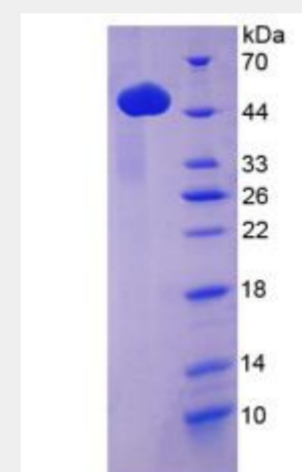
Tags:

N-terminal His-Tag

Product Description

Prokaryotic expression

```
FHWQDTSSF DFRPSVMFHK LQSVMSAAGS
GHSKIPKGNG SYPVGCTDLM FGYGNESV FV RLYYP AQDQG RLDTVWIPNK
EYFLGLSIFL GTPSIVGNIL HLLYGSLTTP ASWNSPLRTG EKYP LIVFSH
GLGAFRTIYS AIGIGLASNG FIVATVEHRD RSASATYFFE DQVAAKVENR
SWLYLRKVKQ EESESVRKEQ VQQR AIECSR ALSAILDIEH GDPKENVLGS
AFDMKQLKDA IDETKIALMG HSF GGATVLQ ALS EDQRFRC GVALDPWMYP
VNEELYSRTL QPLLFINS AK FQTPKDI AKM KKFYQPKER KMITIKGSVH
QNFDDFTFVT GKIIGNK LTL KGEIDSRVAI DL TNKASMAF LQKHLGLQKD
FDQWDPLVEG D DENLIPGSP F DAVTQVPAQ QHSPGSQTQN
```



All products are for RESEARCH USE ONLY. Not for diagnostic & therapeutic purposes!