

Recombinant Phospholipase A2, Lipoprotein Associated (LpPLA2)

Catalog No: tcup2203



Available Sizes

Size: 10ug

Size: 50ug

Size: 200ug



Specifications

Application:

Positive Control; Immunogen; SDS-PAGE; WB.

Species:

Canis familiaris; Canine (Dog)

Source:

E.coli

Purity / Grade:

≥ 98%

Amino Acids:

Ile22~Asp444

SwissProt:

Q28262

Predicted Molecular Weight:

49.06kDa

Observed Molecular Weight:

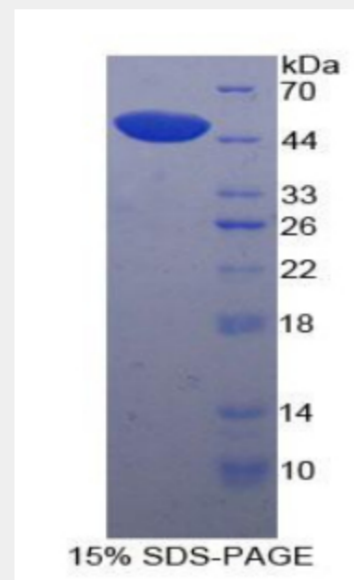
49.06kDa

Tags:

N-terminal His-Tag

Product Description

Prokaryotic expression



All products are for RESEARCH USE ONLY. Not for diagnostic & therapeutic purposes!