

Recombinant Clara Cell Protein 16 (CC16)

Catalog No: tcup2180



Available Sizes

Size: 10ug

Size: 50ug

Size: 200ug



Specifications

Application:

Positive Control; Immunogen; SDS-PAGE; WB.

Species:

Mus musculus (Mouse)

Source:

E.coli

Purity / Grade:

≥ 92%

Amino Acids:

Ser21~Phe96

SwissProt:

Q06318

Predicted Molecular Weight:

9.7kd

Observed Molecular Weight:

9.7kd

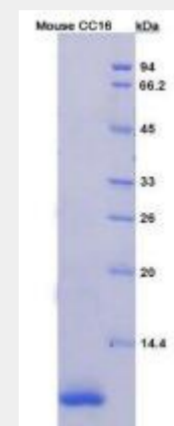
Tags:

N-terminal His-tag

Product Description

Prokaryotic expression

```
SDICPGFLQV LEALLMESES GYVASLKPFN  
PGSDLQNAGT QLKRLVDTLP QETRINIMKL TEKILTSPLC KQDLRF
```



All products are for RESEARCH USE ONLY. Not for diagnostic & therapeutic purposes!