

# Recombinant Clara Cell Protein 16 (CC16)

Catalog No: **tcup2179**



## Available Sizes

---

**Size:** 10ug

**Size:** 50ug

**Size:** 200ug



## Specifications

---

**Application:**

Positive Control; Immunogen; SDS-PAGE; WB.

**Species:**

Homo sapiens (Human)

**Source:**

E.coli

**Purity / Grade:**

≥ 92%

**Amino Acids:**

Ile23~Asn91

**SwissProt:**

P11684

**Predicted Molecular Weight:**

9.0kd

**Observed Molecular Weight:**

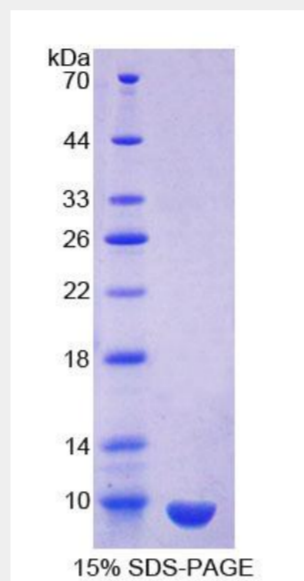
9.0kd

**Tags:**

N-terminal His-Tag

## Product Description

Prokaryotic expression



All products are for RESEARCH USE ONLY. Not for diagnostic & therapeutic purposes!