

Recombinant Prolactin (PRL)

Catalog No: **tcup2152**



Available Sizes

Size: 10ug

Size: 50ug

Size: 200ug



Specifications

Application:

Positive Control; Immunogen; SDS-PAGE; WB.

Species:

Homo sapiens (Human)

Source:

E.coli

Purity / Grade:

≥ 95%

Amino Acids:

Leu29~Cys227

SwissProt:

Q5THQ0

Predicted Molecular Weight:

26.4kDa

Observed Molecular Weight:

26.4kDa

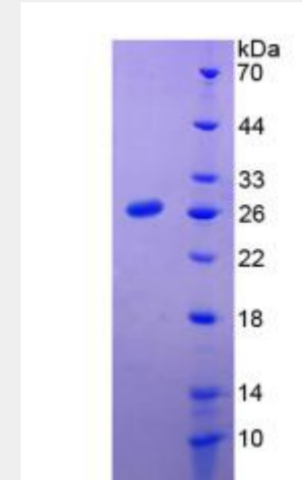
Tags:

two N-terminal Tags, His-tag and T7-tag

Product Description

Prokaryotic expression

```
LP ICPGGAARCQ VTLRDLFDRA  
VVLSHYIHNL SSEMFSFDK RYTHGRGFIT KAINSCHTSS LATPEDKEQA  
QQMNQKDFLS LIVSILRSWN EPLYHLVTEV RGMQEAPAI LSKAVEIEEQ  
TKRLLEGMEL IVSQVHPETK ENEIYPVWSG LPSLQMADEE SRLSAYYNLL  
HCLRRDSHKI DNYLKLLKCR IIHNNNC
```



All products are for RESEARCH USE ONLY. Not for diagnostic & therapeutic purposes!