

# Recombinant Corticotropin Releasing Hormone (CRH)

Catalog No: **tcup2120**



## Available Sizes

**Size:** 10ug

**Size:** 50ug

**Size:** 200ug



## Specifications

**Application:**

Positive Control; Immunogen; SDS-PAGE; WB.

**Species:**

Mus musculus (Mouse)

**Source:**

E.coli

**Purity / Grade:**

≥ 98%

**Amino Acids:**

Arg28~Arg160

**SwissProt:**

Q8CIT0

**Predicted Molecular Weight:**

16.4kDa

**Observed Molecular Weight:**

16.4kDa

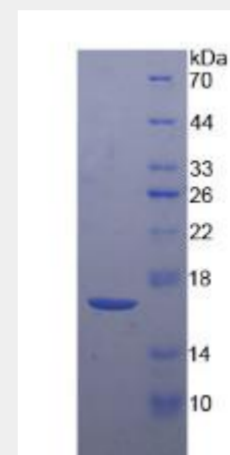
**Tags:**

N-terminal His-Tag

## Product Description

Prokaryotic expression

```
                RGS VPRAPRAPQP LNFLQPEQPQ  
QPQPVLIRMG EEYFLRLGNL NRSPAARLSP NSTPLTAGRG SRPSHDQAAA  
NFFRVLLQQL QMPQRSLDSR AEPAERGAED ALGGHQGALE RERRSEEPPI  
SLDLTFHLLR
```



All products are for RESEARCH USE ONLY. Not for diagnostic & therapeutic purposes!